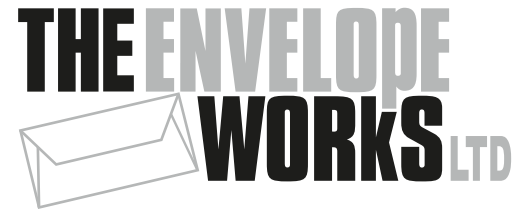




TEW
Creating a sustainable world of colour

Good for the environment



**THE ENVELOPE
WORKS LTD**



COCON
print & fulfilment

Introduction

Bespoke envelope manufacturers
& printers.

With over 120,000 sq ft of
manufacturing capacity we are
located across two purpose built
sites in the UK and the Netherlands

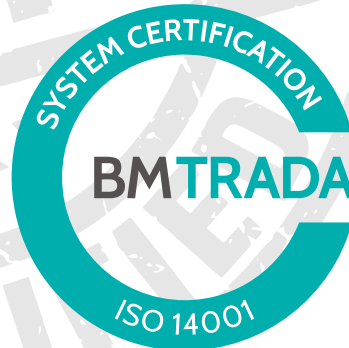




The mark of
responsible forestry

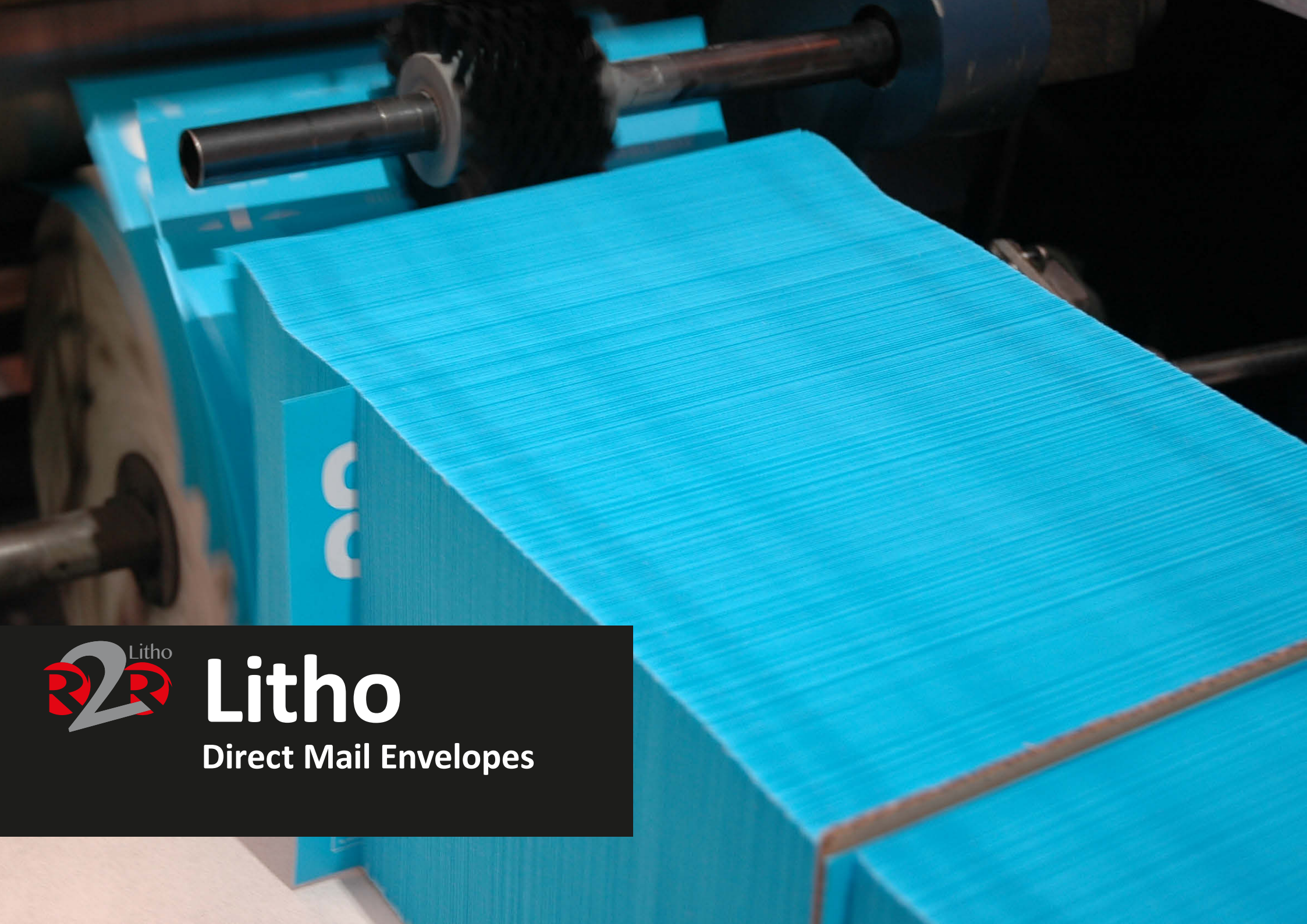


BPiF
member



Certifications Held

- ISO9001
- ISO14001
- FSC®
- PEFC
- GMG Fogra Certification
- BPIF member

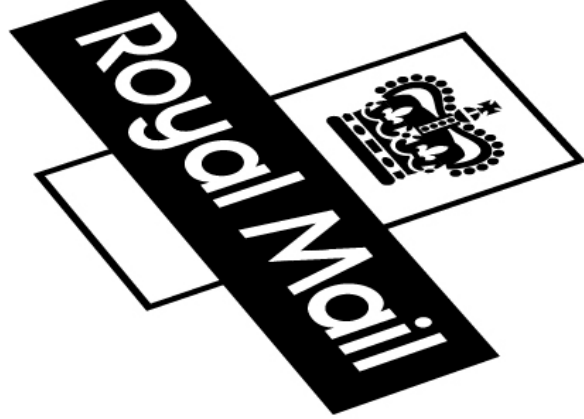


Litho

Direct Mail Envelopes

Flexo

Transactional Envelopes



ered by





Litho

Overprint



Paper

All paper is FSC® or PEFC grade from sustainable managed forests



PEFC™
PEFC/16-33-341

Promoting
Sustainable Forest
Management

www.pefc.co.uk



FSC
www.fsc.org
FSC® C007194

The mark of
responsible forestry



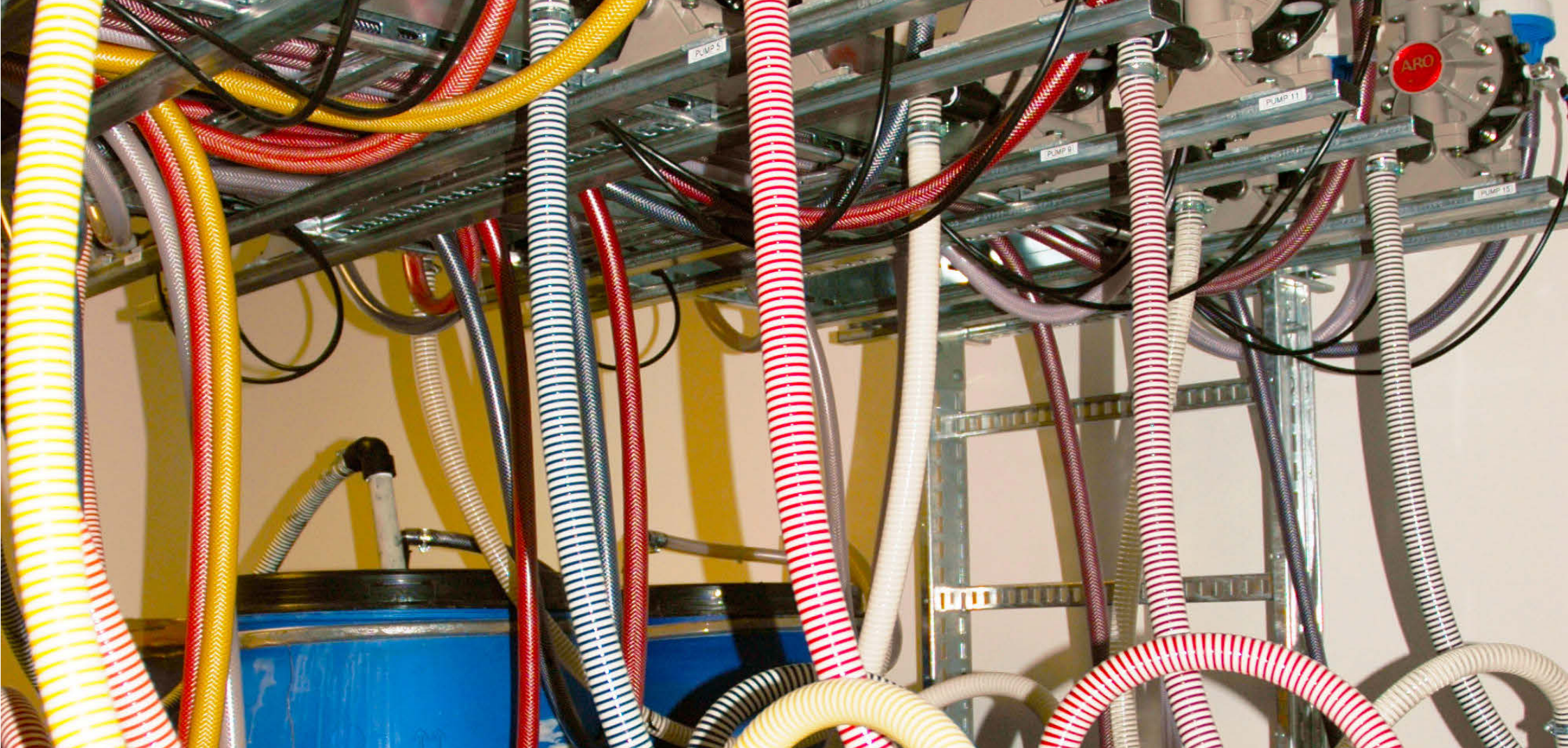
Window Film

Biodegradable & Compostable
Royal Mail approved



Litho Ink

Vegetable based inks



Flexo Ink

Water based inks



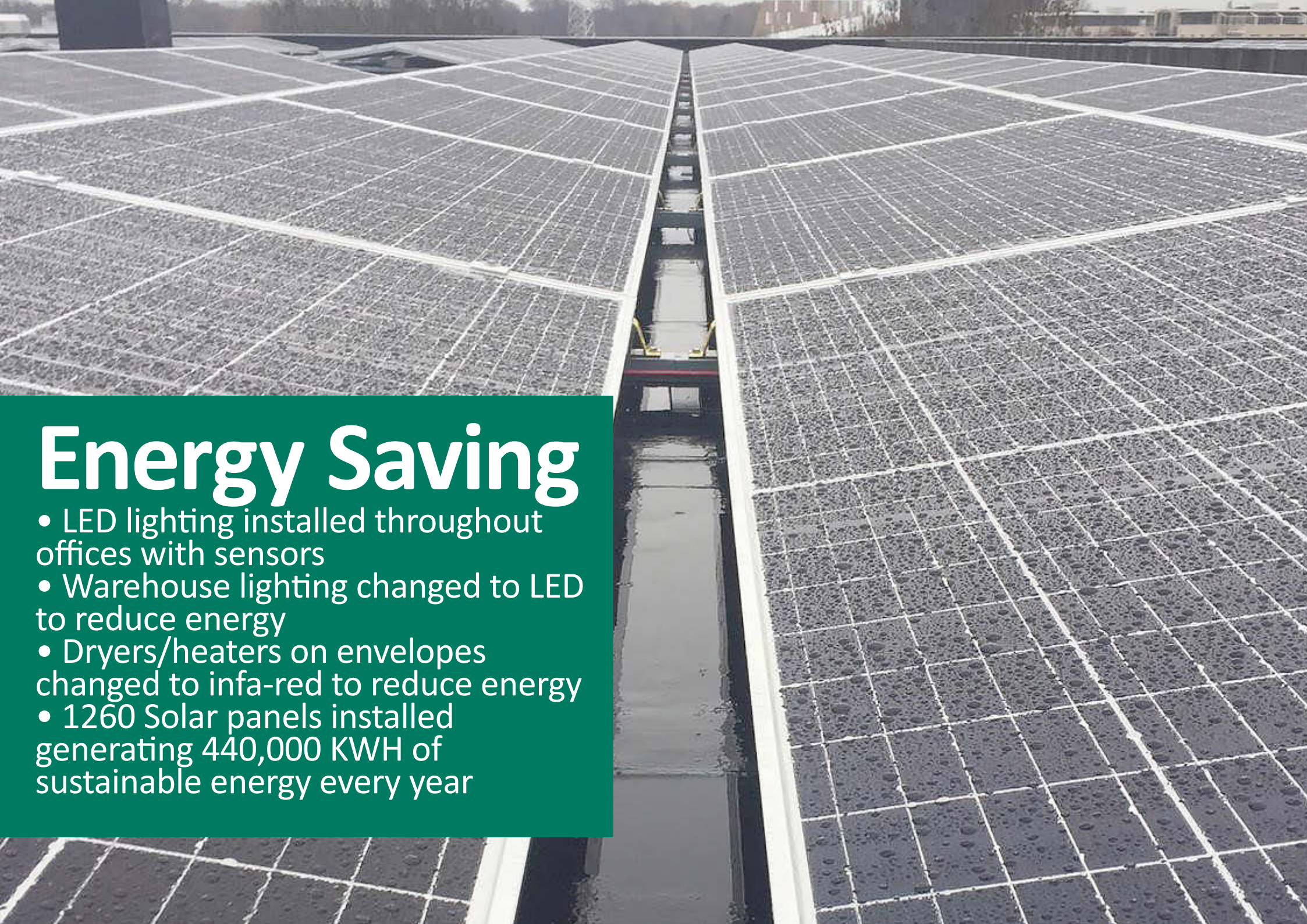
Recycling

All production waste is recycled



Hazardous Waste

Collected by registered & approved carriers/brokers



Energy Saving

- LED lighting installed throughout offices with sensors
- Warehouse lighting changed to LED to reduce energy
- Dryers/heaters on envelopes changed to infa-red to reduce energy
- 1260 Solar panels installed generating 440,000 KWH of sustainable energy every year



Carbon Offsetting

Compensating for the emission of carbon dioxide or other greenhouse gases to the atmosphere



Creating a sustainable world of colour

Duttons Way • Shadsworth Business Park • Blackburn • BB1 2QR

📞 01254 428950

✉️ sales@envelopeworks.com

🌐 www.envelopeworks.com